

## Boom joint angular transducer, 022723

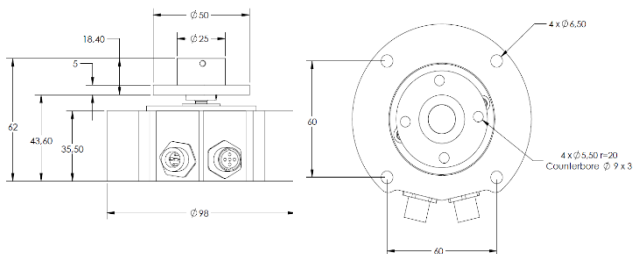


The boom joint transducer measures a non gravity depended angular movement.

The transducer has 2 connectors for the CAN-Open communication including power supply

The device is built to be used in harsh environment where high accuracy is needed.

Normally used in a system together with other transducers to form a complete angle measuring instrument.



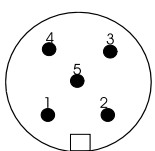
### Technical data

<b>Supply voltage</b>	10 – 30 VDC
<b>Power supply</b>	<100mA
<b>Measurement range</b>	360°
<b>Accuracy</b>	Better than $\pm 0,25^\circ$
<b>Special version</b>	Better than $\pm 0,1^\circ$

<b>Resolution</b>	$\pm 0,001^\circ$
<b>Bus Connection</b>	CAN-Open

<b>Housing</b>	Steel housing, zinc plated
<b>Mounting</b>	4* M6 screws
<b>Mechanical connect.</b>	Flexible joint
<b>Connection</b>	Standard M12 A-code plug, 5 pin Male/Female

<b>Operating temp.</b>	-40 - +70°C
<b>Protection</b>	IP67



PIN	Signal
1	Not Connected
2	10..30V DC (Supply voltage)
3	GND / 0V
4	CAN_H (dominant high)
5	CAN_L (dominant low)